

PLUMBING AND
GAS FITTING

STEAM AND
HOT-WATER

HEATING



HARRY B. WALL

HAVERFORD AVENUE

NARBERTH, PA.

ESTIMATES GIVEN

PLEASURE

PROFIT

POWER



From

Wm Darlington -

It was to the lobby of the
Y. M. C. A. first, and
then to the Gym that
the Library moved from
our house on Crane
St. -

Signed Wm Darlington

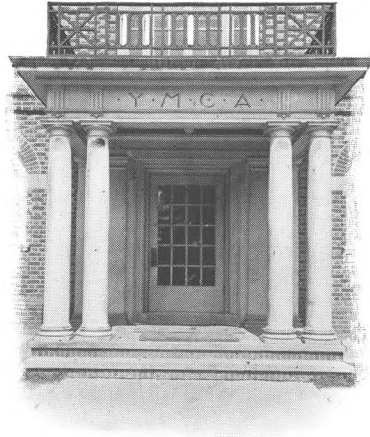
ANNUAL ANNOUNCEMENT
AND
HANDBOOK
OF THE
Young Men's Christian Association
OF
NARBERTH, PENNSYLVANIA

SEASON 1911-1912



FELLOWSHIP
EDUCATION
RECREATION
SERVICE

"NARBERTH'S CENTRE FOR MEN AND BOYS"



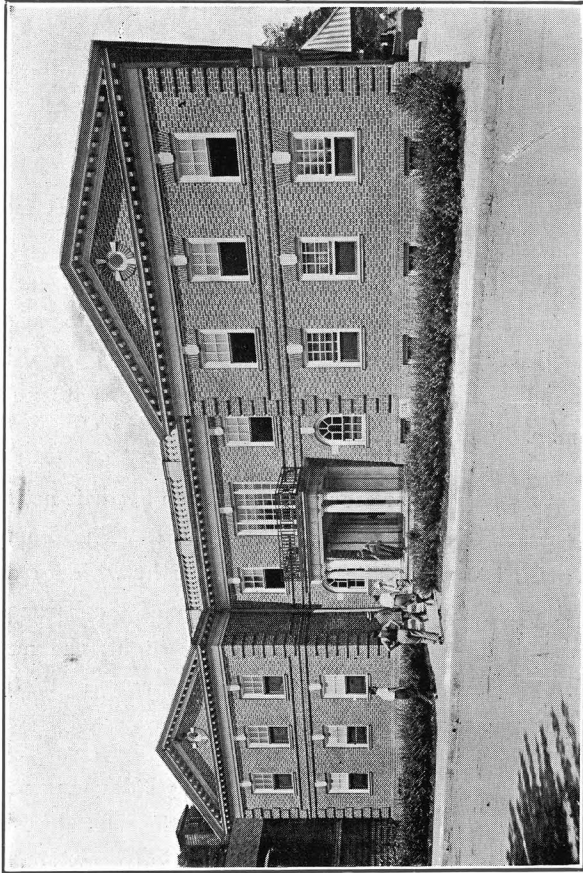
YOU ARE ALWAYS WELCOME HERE

Turning Leisure into Power

THE glory of young men is their strength. It may be strength of character, or physical prowess, or intellectual genius, or social fellowship. But nearly all are abnormal in one or another particular,—“one-sided.” True progress, however, depends on the just and even development of the entire nature of the man.

Most men and boys are made or broken by their activities outside of business or school hours. The Young Men's Christian Association of Narberth, with its excellent equipment, located in the center of the borough, offers to both men and boys, day or night, the most wholesome means of recreation and the most stimulating aids for personal development.

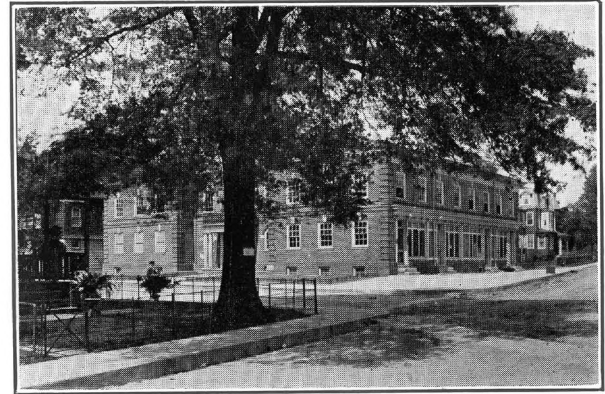
The purpose of the Association is to aid young men and boys in developing and balancing their intellectual, physical, spiritual and social qualities; to round out a stronger, truer, happier manhood.



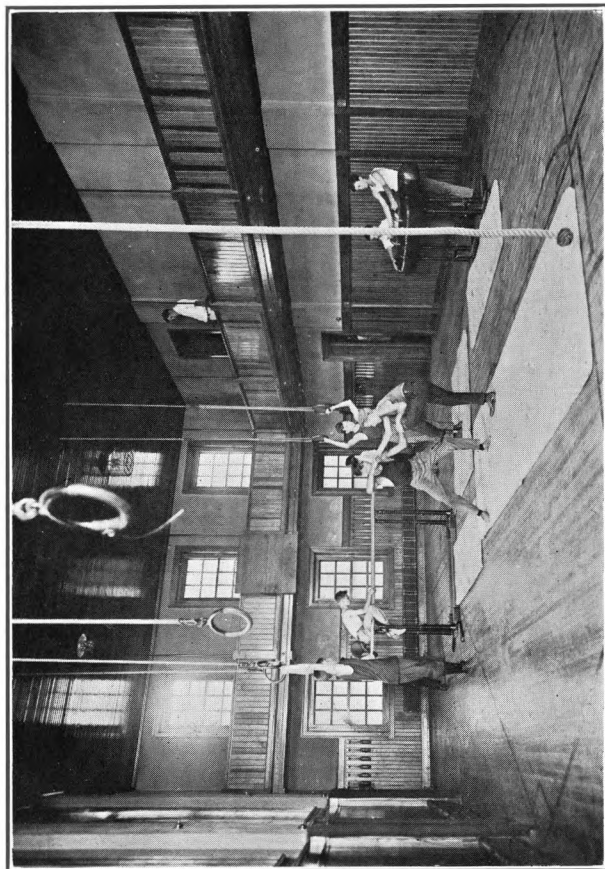
THE ASSOCIATION BUILDING
AVERAGE WEEKLY ATTENDANCE OVER 450

The building has a capacity to accommodate six hundred members,—sufficient for all the men and boys of Narberth. Its equipment is unsurpassed by any Association in the country in a town of equal size.

The Association management extends to self-respecting men and boys a cordial invitation to become members, to enjoy the privileges and to lend a hand in promoting the good service of the Association.



LANDMARKS, OLD AND NEW



THE HEALTH DEPARTMENT

PHYSICAL

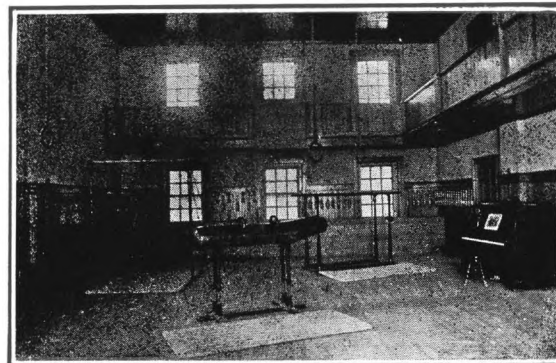
PHYSICAL efficiency is necessary for the fullest enjoyment of health, as well as an asset for success in life.

The aim of the Association in this department is to meet the physical needs of the largest number of men and boys.

The gymnasium, with its modern equipment, is well lighted, and provided for an abundance of fresh air and sunshine. The maple floor is free from all obstructions and is 60 x 28 feet in size.

The apparatus, new and most approved, will meet all needs and "hobbies," as will the facilities for indoor baseball, basketball, handball, volley-ball, athletics and gymnastics. You will find groups of members participating in the many activities at various times during the week.

Classes for both men and boys receive particular attention. A competent physical director is in charge. Last season's success warrants a prediction of unsurpassed active interest this year.

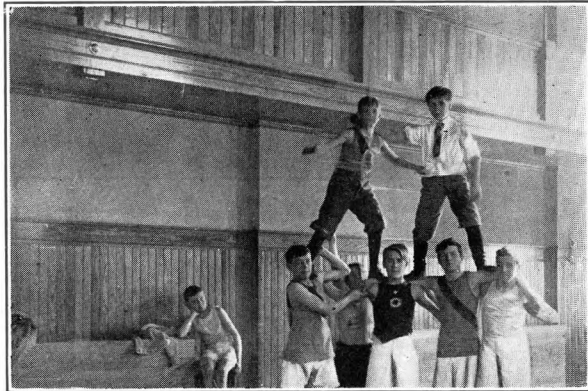


MODERN APPARATUS

SCHEDULE OF CLASSES

(Beginning October 16th and continuing until April, 1912.)

Classes.	Mon.	Tues.	Wed.	Thur.	Fri.	Sat.
Business Men	7.45	7.45
Young Men	8.30	8.30
High School Group ...	3.30	..	3.30	..	3.30	..
Grammar School Group	..	3.30	..	3.30
Athletic Training.						
Boys' Group	10.30
Men's Group	3.00
Basket-Ball Practice.						
Junior	3.00	10.00
Senior	8.30	..
Basket-Ball Games.						
Junior	8.00
Senior	8.30



ONE OF THE CLASS GROUPS

Athletic Contests

Twice each month athletic and gymnastic contests occur, at which time standard events will be run off. A silver medal will be given to the one in each class winning the highest number of points during the year. Each contestant will be credited points according to his performance.

Dual meets with other associations, and gymnastic exhibitions will be arranged during the season.

An *Annual Exhibition* in the gymnasium in April will mark the closing of the in-door season.

Physical and Medical Examinations

Safe and sane exercise is based upon a physical examination. It is strongly urged upon each user of physical privileges. They are given free to members by the medical examiner in consultation with the physical director.

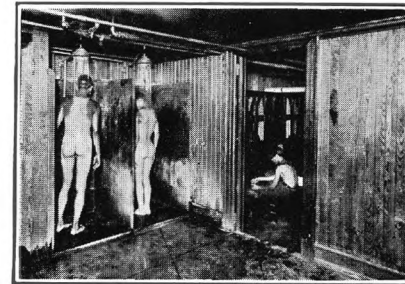
Wrestling and Corrective Gymnastics

Special individual lessons in wrestling and corrective exercise can be arranged for. Corrective work is determined by the need. The rates to members are 25 cents per lesson or ten lessons for \$2.00.

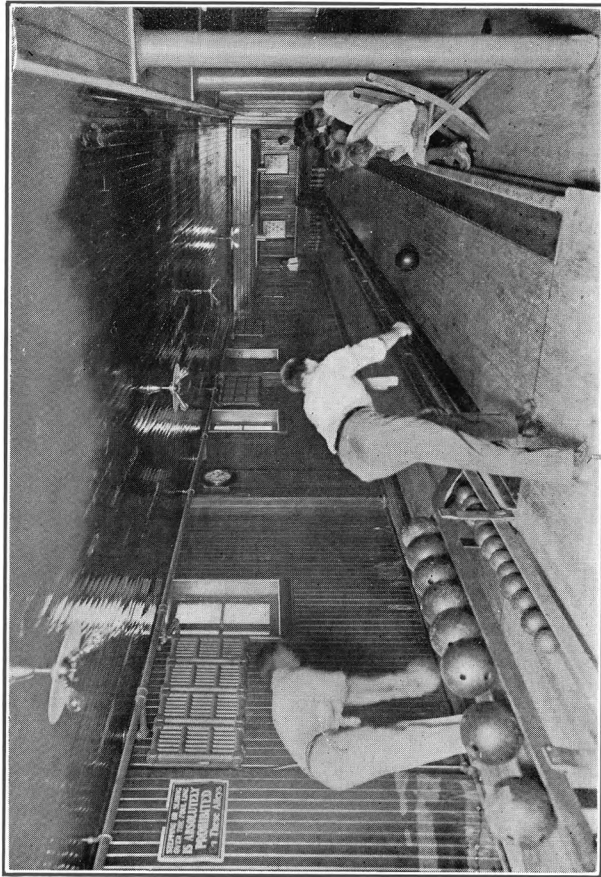
Baths and Lockers

The shower-bath and locker rooms are within easy access. Up-to-date, convenient shower-baths, with an abundance of hot and cold water, are provided.

The new steel lockers, with combination locks, are large and well ventilated. You are entitled to use of locker and baths if you hold a physical ticket, or they may be purchased separately from the gymnasium privilege.



SHOWER AND LOCKER ROOMS



HEALTHFUL AND SKILLFUL

Bowling

Bowling is always a favorite sport and pastime, productive of healthful exercise and competitive skill. Ten-pins, duck-pins, and candle-pins are provided. Two, four and five-men teams will roll matches with other organizations. A new ball and case is offered to the member making the highest individual score this season. A championship contest is also scheduled.

Basket-ball

The representative basket-ball team for the season of 1910-11 was the fastest ever organized by the local Association. Crowded galleries and regular attendance were features indicative of the popularity of the game.

The home team played sixteen games; won eleven and lost five. They defeated Camden Y. M. C. A. and West Philadelphia Y. M. C. A. several times, but lost two games to the Norris-town Y. M. C. A., although closely played. The local team scored 472 points to opponents 389.



SENIOR BASKET-BALL TEAM

NOTES

Do not neglect to have a physical examination.

The gymnasium is open daily (except Sunday) from 10 a. m. to 10 p. m.

The shower and locker-rooms are open until 10.30 p. m.

Use your locker. Do not leave apparel lying about the room. Y. M. C. A. towels must not remain in lockers over night.

Towels are rented at three cents each. Soap is sold in individual cakes at one cent each.

Carry your physical ticket with you. You may be asked to show it.

Members in street clothing are not permitted in gym. classes. You may secure suit at special prices from the Association.

The regulation suit consists of white sleeveless shirt, rubber-soled gymnasium shoes, white running or long turner pants.

None but members wearing approved soled shoes are permitted on the floor. Others must use the galleries.

Keep gym. clothing and athletic uniforms clean and sanitary by frequent laundering.

Remember there are others to follow you. It will help them if you leave the apparatus in good condition; also if you do not run the hot showers unnecessarily.

Be sure to place all your belongings in your locker and lock before leaving room. The Association is not responsible for them if left elsewhere.

The Physical Director will gladly confer with any member or group who may wish particular suggestion or advice.

BATHING HINTS

Short, quick baths are best if you bathe regularly.

A two-minute bath and ten-minute rub with a turkish towel is superior to the reverse.

Many people are careless about the hair. Dry your head and hair thoroughly, and thus avoid colds.

Care should also be taken in coming out of the dressing-room after taking a shower. Keep out of draughts.

Hot baths reduce weight. Unless you are very fleshy, use hot water sparingly.

Cold baths are very beneficial, but all cannot take them. If they depress or tire you, consult with the Physical Director, the Medical Examiner or your physician.

EDUCATIONAL

INTELLECTUAL cultivation and recreation should alternate with muscular exercise. The Association affords ample opportunity for artistic betterment or mental activity of a deeper or lighter vein.

Library and Reading Room

The reading room is a delightful place to spend an hour. Magazines and periodicals of many kinds are always on file.

Several hundred new books have been added, until now there are at the disposal of a member nearly a thousand volumes.

Orchestra and Chorus

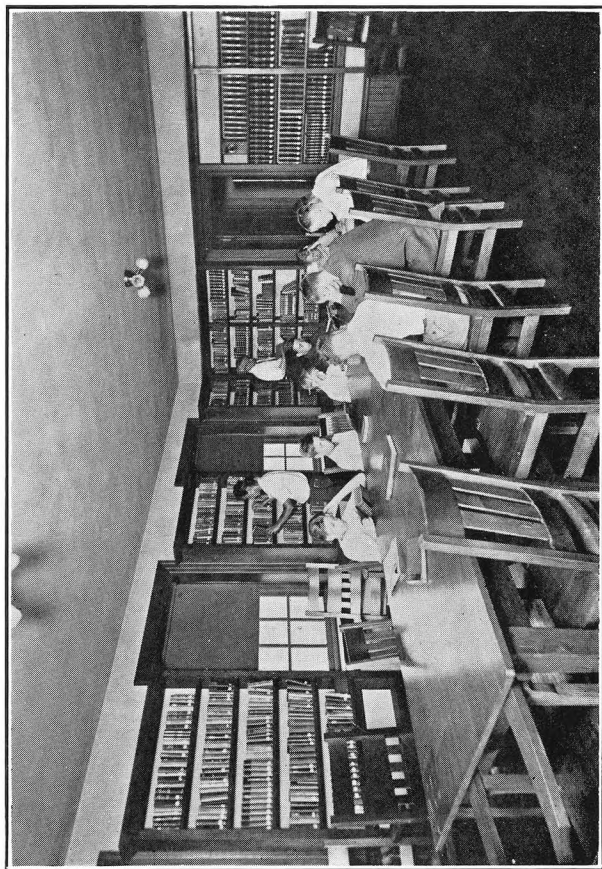
Those interested in vocal or instrumental music, and who have ability in these lines, are eligible for membership in the Association Chorus and Orchestra. These organizations are well established and are fortunate in being under able, competent leadership. Their annual concerts are big features, and their assistance at other functions is always looked forward to. These clubs are open to both members and non-members.

Camera Club

A dark-room equipped for developing films and plates is at the disposal of members who have a liking for photography. An excellent opportunity is offered for a club of members who make it a "hobby."

Community Health Talks

This series of talks is a new feature that should prove of interest and benefit to the general community this winter. They will be given by local physicians and specialists. The



LIBRARY AND READING ROOM
A PLACE FOR CULTURAL AND RECREATIVE READING

public is invited, the entire course being free to all. The talks will be given on Tuesday evenings at 8.15, as follows:

Tuesday, January 9thDr. O. J. Snyder.

Fatigue and Recreation.

The effect of overwork and excitement. The place of relaxation and play.

Tuesday, January 23dDr. Wm. Zentmayer.

The Eye and Its Appendages.

Tuesday, January 30thI. E. Bennett, M. D.

The Ear and the Nose.

Tuesday, February 6thR. C. Hoffman, M. D.

The Skin.

Tuesday, February 13thE. L. Kanaga, D. D. S.

The Mouth and the Teeth.

Tuesday, February 20thC. T. Faries, M. D.

Food and Digestion.

A study of diet and judicious living.

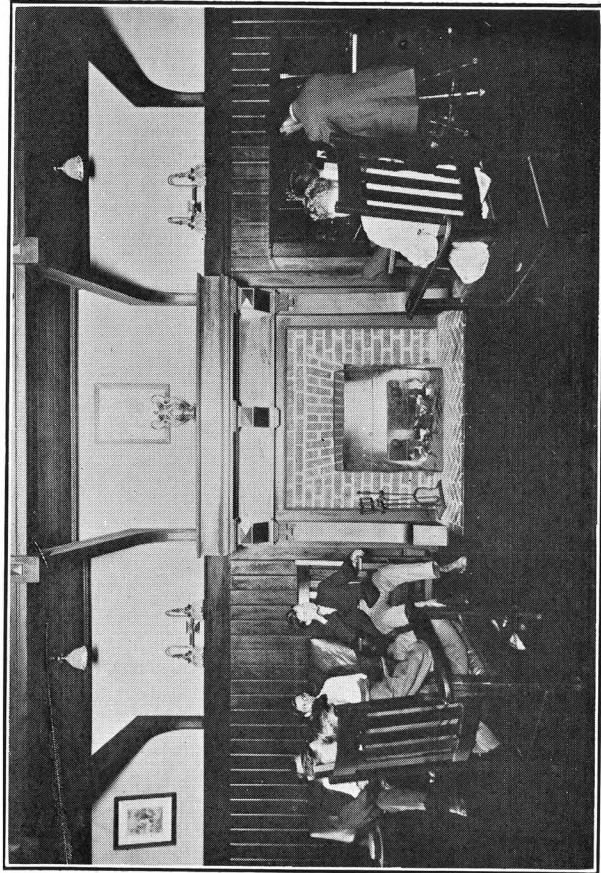
Tuesday, March 5thDr. O. J. Snyder.

The Nervous System.

Tuesday, March 19thC. T. Faries, M. D.

Immunity and Sanitation.

A discussion of natural and acquired immunity, and of personal and public preventive sanitary measures.



THE LOBBY

SOCIAL

THE ASSOCIATION BUILDING is naturally the social center for the men and boys of the borough. This makes an important promotive opportunity, both for the Association relative to the community, and the individual to the Association in general.

Within the membership are groups for fellowship, and fraternal and social service. Informal sociability permeates the atmosphere throughout the building at all times. Here is a most desirable place to make new acquaintances and renew old ones.

Wood Fires

The open wood fire, with a blazing log, is always inviting and cheerily welcomed on wintry nights. Around these fires many friendships are deepened and reminiscences unfolded. There one is free to enjoy his own thoughts in reverie.

The Lobby

The lobby or reception room is the meeting place for many. With the attractive fire-place, the comfortable chairs and davenport, and a piano, it affords a place to pass many pleasant hours.

Open House

Saturday evening, October 14th, will mark the fall opening of the in-door activities. An attractive evening program is anticipated. The entire building will be open for inspection from 8 to 10 p. m. The year's work will be briefly outlined by the President and General Secretary. The members and friends of the Association are cordially invited.

Annual Dinner

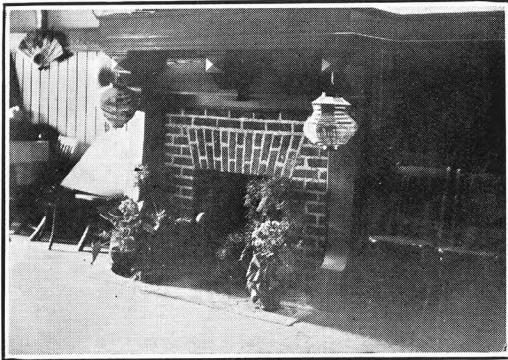
The Annual Dinner, one of the most popular functions of the year with members and friends, will be given in December, 1911. Date to be announced.

Socials and Receptions

Other social functions, such as an occasional ladies' night or boys' "eats" social, or a novel feature, as Halloween or St. Valentine's, are held frequently. On many occasions the lobby is the very heart of the building.

Chess and Checker Club

Excellent facilities are provided for chess and checkers or photography. Two such clubs are possible. If you are interested, speak with the Secretary.



The Game Room

The game room is always a rendezvous for the young men. Three regulation pool tables afford opportunity to enjoy a friendly game amid favorable surroundings and agreeable associates. During the year two tournaments, including a championship match, will be run off.

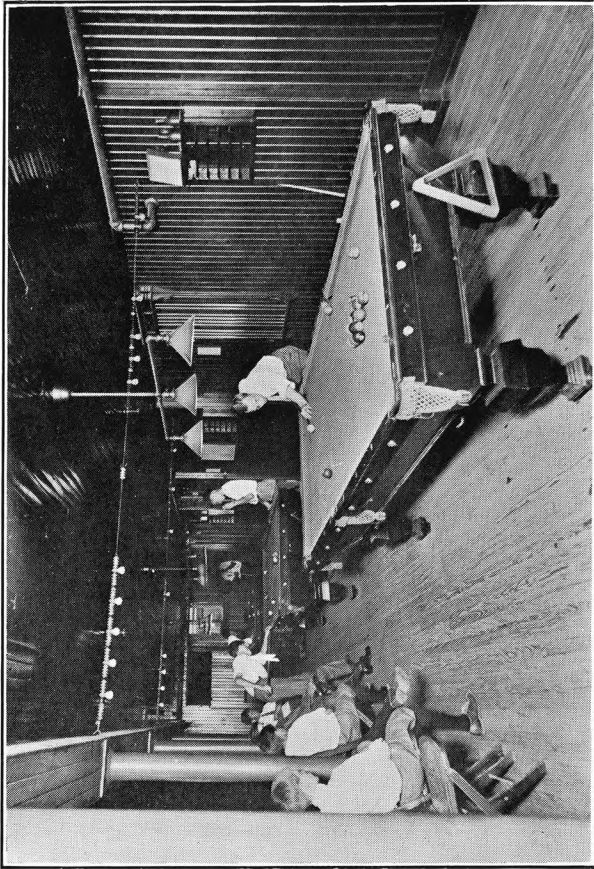
Entertainment Course

The Association Star Entertainment Course to be given this winter promises to be one of the best features of the year. An unsurpassed program is in store for those fortunate to have season tickets. Special prices are offered to members. Members are entitled to two tickets at members' rates, but all are charged regular rates over that number. All season tickets include reserved seats.

Prices of Admission

Non-members, reserved seat course ticket	\$1.50
Members, reserved seat course ticket	1.00
Non-members, single night only35
Members, single night only25

The course includes six varieties of entertainment, opening in November, 1911, and concluding in April, 1912. Doors are open at 7.30 p. m. Each entertainment will begin promptly at 8.15. No reserved seats held after 8.10.



A WHOLESOME PASTIME

THE ATTRACTIONS

Thursday, November 23, 1911.

The Marshalls.

Dramatic artists. Presenting one-act lyceum plays.

Saturday, December 23d.

Caveny & Co.

Cartoonist, clay-modeler, impersonators, soloists.

Tuesday, January 16, 1912.

Fred Emerson Brooks.

Humorist, orator, actor, ventriloquist and author.

Monday, February 26th.

Edwin Brush.

Magician, illusionist, entertainer. Second only to Keller.

Monday, March 11th.

Gilbert A. Eldridge.

Costumed character sketches and impersonations.

Friday, April 12th.

Musicale.

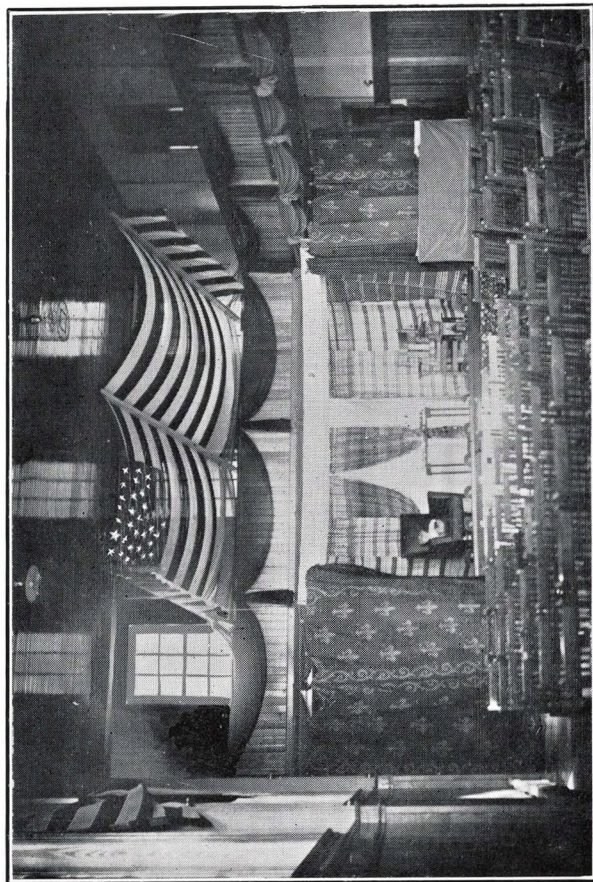
Association Chorus and Orchestra. Highly successful last season.

For further information see special folder giving detail of each number of the entire course.

Get Tickets

Reserved for Season

DO IT NOW



FOR ENTERTAINMENTS, LECTURES AND RELIGIOUS MEETINGS

RELIGIOUS

THE RELIGIOUS WORK is the life-blood which must flow through every part of the Association. The only way in which a Christian spirit can pervade every department is by the presence of Christian men and boys. If this work is not done by members of the Association it must remain undone. Here is an unequalled opportunity for service. The Association is the strong ally and right arm of the Christian church. It is the kind of work men enjoy—a work for men by men. The object is to relate men and boys to the churches of the community through co-operation.

Sunday Afternoon Meetings

are held at 4 p. m. the first Sunday of each month from November to April. Instrumental and vocal music and a live fellowship song service, followed by a strong address, make up a pleasing and profitable meeting. Among the speakers arranged with are Professor Francis H. Green, of the West Chester State Normal School; George E. Burgess, State Secretary, Y. M. C. A., Harrisburg; Dr. Wm. A. Freemantle, professor of theology, Temple University; Dr. Charles Wesley Burns, Dr. Frederick W. Farr, Dr. Edwin A. Romig, and Robert B. Adams.

Bible Study

Bible study will receive emphasis in this year's program of work. A course in teacher training for adults, and one course each for grammar and high school boys is planned. The suggested courses are as follows: Grammar school boys, "Men Who Dared," or "Old Testament Heroes"; High school boys, "Life Questions of High School Boys," or "Life Problems of Young Men."

Teacher Training Course

A teacher training course will be given in the Association building on Friday evenings, beginning October 20th. Teachers

and officers of all the Sunday-schools are invited, as well as all others desiring to take the course. The class is fortunate in having as leader, Professor L. M. Keim. "Preparation for Teaching," by Charles L. Oliver, will be used. Methods and psychology of teaching will form principal features. Over a hundred reference books, written especially for Sunday-school work and teaching, are in the library, and are at the disposal of those in this class. Diplomas will be awarded to those finishing the course.

Bible Lectures

A tentative arrangement has been made with Rev. William Freemantle, D. D., to give a series of stimulating Bible lectures on Friday evenings, beginning April 19th, continuing for five successive weeks. Dr. Freemantle is widely known as a scholar and expositor. He is a graduate of Oxford, and is professor of theology at Temple University. The five lectures are open to the entire community.

The Men and Religion Forward Movement

will be an important part of international work this coming year. The Association will co-operate fully in the promotion of this movement.

Union Twilight Meetings

During July and August the churches unite in Sunday evening twilight services under the auspices of the Association. These have proven immensely successful the past two summers. It is hoped that they will continue so. This past summer the attendance was over 1,400.

Yoke Fellows' Band

This is a new fellowship circle to be formed this winter. More will be heard and said about it later.

BOYS' DEPARTMENT

EVERY healthy boy enjoys and craves the companionship of other boys, and he is bound to find those things he desires. Recognizing this, the Association aims to assist in providing them under wholesome influences. It does not seek to supplant the home, the church, or the school, but to assist and supplement these.

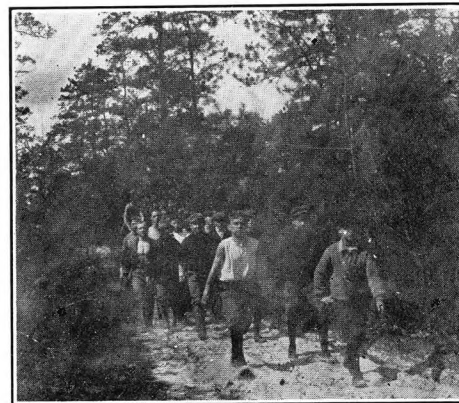
It endeavors to be of utmost value to each boy. With this in mind there is provided an equipment for the exclusive use of boys.

The Boy's Game Room

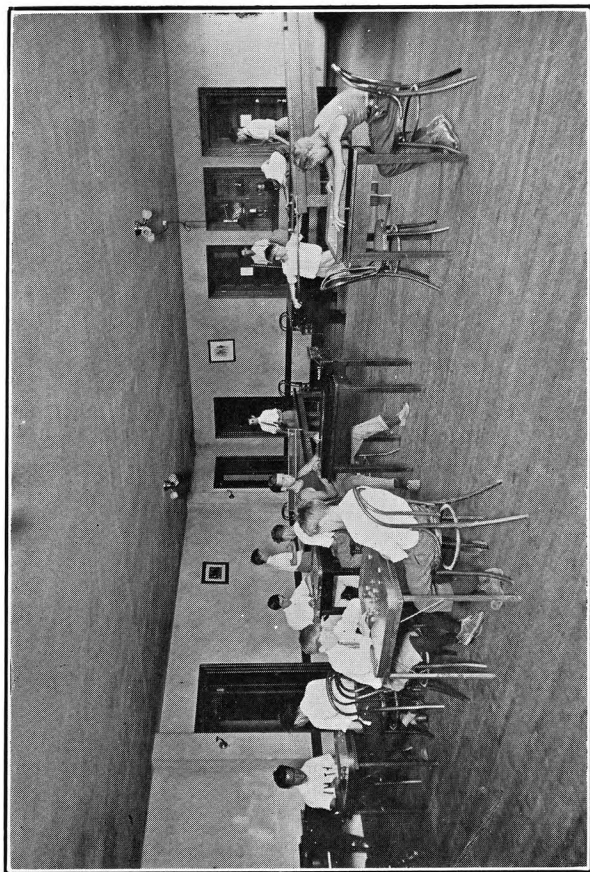
is open to members under eighteen years of age. It is furnished with cue-roque, ping-pong, and tivoli tables, beside several smaller game tables for checkers, carroms, crokinole, bowlette, baseball, etc. A piano for their use is also provided in this room.

Self-Governing Clubs

The endeavor is to have the boys govern themselves. To this end they will organize clubs grouped together on the



ON A HIKE



BOYS' GAME ROOM

borough plan. They will elect their own officers and administer justice as citizens of a borough are expected to do.

The Gymnasium

with class instruction, is also adapted to their needs. For periods, see "Schedule of Gymnasium Classes," under "Physical," in front pages of booklet.

Boys' Leagues

The Boys' Baseball League, run during June and July, proved very popular with the boys of the borough. Four teams started the race. The "Athletics" won eight games and lost one, with a percentage of .889, thus being the first to have the honor of holding the Y. M. C. A. cup for the Boys' Baseball League.

Last year the "Junior" and "Midget" basket-ball teams played some very interesting games. If feasible, a boys' basket-ball league will be organized this winter.



JUNIOR BASKET-BALL TEAM

Camps and Hikes

Hiking and camping are always seasonable, summer or winter. A number of hikes and over-night camps will be arranged.

Excellent summer camps are offered. Boys under fifteen are extended the privilege of camping at Kenilworth, N. J., where the Central Branch, Philadelphia Y. M. C. A., has a permanent site. Older boys may join the Pennsylvania State Camp, at Chesapeake Haven, Md. (See special booklets early in season.)

Reading Room

The library and reading room are open to boys on week days from 3 to 5 p. m. Many books and magazines have been procured especially for their use.

Boys' Hours

Boys under sixteen have the use of the building from 2 p. m. to 6 p. m. daily, and on Saturdays and holidays from 9.30 a. m. to 6 p. m. They are not allowed in the building during the evening except by special permission from the Secretary or upon certain special occasions.



BOYS' CAMP-FIRE

HOW YOU MAY JOIN

1. Introduce yourself for membership. (Non-sectarian. Church membership not required.)
2. Pay membership dues and fees.
3. Begin use of privileges at once.

DUES AND FEES

Your Share of the Expense

Special Annual Rate—\$5.00

Entitles to all membership privileges, baths, locker and all gymnasium privileges.

This ticket is recognized for membership only in all other Associations.

Membership Dues—Men and Boys

Four months, *\$1.00; one year, \$2.00.

Entitles to the use of the lobby, check room, library, reading room, game rooms, clubs, socials, receptions, Bible classes, religious meetings, and the right to purchase *special privileges* at rates indicated.

Members may, on application to Secretary, secure general house privileges for their friends or guests, or they may secure use of games for their guests at members' rates, provided that no guest shall be admitted to the same privilege more than three times within a year.

Special Privilege Fees

In addition to membership dues.

	Men and Boys.	4 Mos.*	Year.
Baths and Locker.....		\$1.00	\$2.00
Large Locker (extra)50	1.00
Gymnasium		1.00	2.00

* Only half of rate is charged for third consecutive four months' period.

Wrestling and Corrective Gymnastics

Twenty-five cents per lesson. Ten lessons, \$2.00.

Pool—40 cents per hour per table.

Bowling—10 cents per game; 3 games for 25 cents.

Bath Towels—3 cents each. Soap, 1 cent per cake.

ADMINISTRATION

Board of Trustees

A. J. Loos
A. C. Shand
W. D. Smedley
Charles E. Kreamer
F. Milwood Justice

Board of Directors

Robert L. Beatty
J. Berg Esenwein
Edward S. Haws
Romaine C. Hoffman
Harry S. Hopper
Albert P. Hughes
Charles E. Kreamer
C. Howard McCarter
Frank H. Prescott
William D. Smedley
Fletcher M. Stites
Thomas C. Trotter, Jr.

HARRY S. HOPPER, *President*
FLETCHER M. STITES, *Chairman*
ROBERT L. BEATTY, *Secretary*
ALBERT P. HUGHES, *Treasurer.*

Executives

EDWARD R. PIKE, *General Secretary*
~~W. LEROY THOMPSON, *Physical Director*~~

32

FRED. MCCOLLUM,
PHYSICAL DIRECTOR.

SIGNIFICANT FACTS

Concerning Last Year's Work

December 1, 1910—May 1, 1911.

Different members during year	233	{ Men 170 Boys 63
Number of social events	56	
Attendance at social events	1,259	
Different members entitled to gymnasium	157	
Number enrolled in gymnasium classes	65	
Attendance at gym. classes	552	
Total attendance at all gym. privileges	2,619	
Physical examinations	23	
Number books in library	1,000	
Educational club sessions	57	
Number individuals in clubs	68	
Number of religious meetings	5	
Attendance at religious meetings	332	
Placed in positions of employment	4	
Number of members on committees	70	
Average daily attendance at building	65	
Total attendance at building	7,589	

Women's Auxiliary

The ladies of the community have assisted in the work of the Association in many helpful ways. They have taken entire responsibility for several suppers and socials. The Book Reception was a success mainly through their efforts. They have given liberally, donating \$50.00 to the Book Fund and \$75.00 to the Piano Fund, besides lesser amounts in other channels.

33

SUPPORT

HERE is an institution doing a work of which our community is proud. Every good citizen, man or woman, rich or poor, wants a part in it. All recognize its worth for the bettering of the men and boys of Narberth.

It will be necessary to secure \$3,500.00 in contributions if this year's plans are to be carried out. This request is moderate in comparison with the work done and results secured. But it is a statement of absolute and genuine need. All gifts, both large and small, will be welcomed. The Directors and Trustees alone contribute over \$1,500.00 of this amount. What part of the other \$2,000.00 will you give?

Tear out and mail

INDIVIDUAL PLEDGE

To the Directors of the Y. M. C. A.,

NARBERTH, PENNA.

Gentlemen:

In view of the importance of the work, I promise to pay to the Treasurer of the Narberth Y. M. C. A. as a contribution to its

work \$.....

Signed.....

Address.....

Date when payable..... 19.....

Indicate how payable, monthly, quarterly or annually.



ONLY the hearty and generous support of the business men have made possible this presentation of the year's work. Their endorsement of the work of the Y. M. C. A. is evidenced by the next few pages. We heartily commend them to you for your consideration. They are always at your service.

W. G. HOPPER
MEMBER PHILA. STOCK EXCHANGE

H. S. HOPPER
MEMBER PHILA. STOCK EXCHANGE

Wm. G. Hopper & Co.

STOCK AND BOND BROKERS

28 SOUTH THIRD STREET
PHILADELPHIA

CABLE ADDRESS
"REPPH-PHILA."

LOCAL AND LONG DISTANCE
TELEPHONE CONNECTION

WM. F. J. FIEDLER PRACTICAL DRUGGIST

NARBERTH, PA.

Opposite P. R. R. Station

PHONE NARBERTH 625



25c. bottle. 50c. 1/2-pint can

U-Kan-Plate

RESISTS
TARNISH
AND
PROLONGS THE LIFE
OF
SILVERWARE
FOR SALE BY
Grocers and Department
Stores

BOOM NARBERTH

Yesterday is gone—forget it!
To-morrow doesn't exist—don't worry!
To-day is here—use it!!

Just think of it—sixteen minutes from Broad Street Station, and a train every half hour; four fine churches, a modern Y. M. C. A., a school equal to any in the U. S., several of the best plumbers, several first-class painters, first-class coal and building supply dealer, first-class fish and oyster house, first-class meat shop, first-class bakery; in fact, everything in the town that is needed to make it first-class—and the Imperial Grocery Store, which has put new life into the grocery business along the main line.

It is a thing of the past to hear them say: "Suburban life is all right, but everything is too high." Now they come and say: "How can you afford to sell us goods as cheap as you do? You are saving us money and we appreciate it." Continue to encourage us and we will always strive to pursue the same course. Deal at the Imperial and save money.

Very respectfully
THE IMPERIAL GROCERY CO.
NARBERTH, PA.

FRED. A. WALZER HOUSE AND SIGN PAINTER

ESTIMATES GIVEN

113 CONWAY AVENUE NARBERTH, PA.

CHARLES SCHWARTZ

REFITTING AND REMODELLING

OF

Ladies' and Gentlemen's Clothing

REPAIRING, PRESSING AND CLEANING

Done Satisfactorily and Promptly

104½ FORREST AVENUE NARBERTH, PA.
(Opposite Y. M. C. A.)

PETER MIESEN BAKER AND CONFECTIONER

209 HAVERFORD AVENUE

NARBERTH, PA.

Loos & Dilworth
Manufacturers,
Importers and Exporters

ILLUMINATING, LUBRICATING,
ANIMAL, AND VEGETABLE
OILS, NAVAL STORES, DENA-
TURED ALCOHOL, PARAFFINE
WAX, HIGH-GRADE CYLINDER,
ENGINE, AND DYNAMO OILS

PARAGON AUTO OILS
PERFECTION OF LUBRICATION

134 SOUTH FRONT STREET
PHILADELPHIA, PA.

INSURANCE
TROTTER BROS.
337 WALNUT STREET
PHILADELPHIA, PA.

WALTON BROS.
WE DO ALL KINDS OF
HAULING

FURNITURE AND PIANO MOVING A SPECIALTY
PACKING AND SHIPPING FURNITURE
COACHES, BUSSES, LIVERY, BOARDING
NARBERTH, PA.

YOU OWE IT TO YOURSELF
HEALTH AND EFFICIENCY

COME THROUGH REGULAR CLASS
INSTRUCTION IN THE
Y. M. C. A. GYM.



HOME MAKING

THE BEST OF EVERYTHING IS FOUND
IN YOUR HOME

Motives in its Inspiration
Materials in its Construction
Pleasure in its Completion
An Estey Organ in its Music Room

The love for an Estey Organ is inherited—for it was the Organ found in the homes of our grandmothers, and the children follow in their footsteps.

Estey player-pianos are equally popular, and have a generous share of praise.

ESTEY HALL

WALNUT STREET AT SEVENTEENTH, PHILADELPHIA

EVERY DAY IS RECEPTION DAY

INSURANCE

J. WITMER WOLF

106 WALNUT AVENUE

ARDMORE, PA.

WE MAKE
REPAIR

ANY PART OF

YOUR AUTO

OXY-ACETYLENE WELDING

THE VULCAN

BRAZING & MACHINE CO.

310-312 North Sixteenth Street

PHILADELPHIA

E. W. HANSELL'S SONS

Milk and Cream

From Selected Dairies

SPECIAL MILK for INFANTS and INVALIDS

Phone 621 A

NARBERTH, PA.

OWN YOUR HOME

WM. D. SMEDLEY
CONTRACTOR AND BUILDER
NARBERTH, PA.

BUY OR BUILD

EDWARD S. HAWS

PLAIN AND
ORNAMENTAL

PLASTERING

107 DUDLEY AVENUE

NARBERTH, PA.

MAIN LINE REALTY CO., Inc.
FRED. W. CASSIDY, President ALLAN J. CASSIDY, Sec. and Treas.

REAL ESTATE

IN ALL ITS BRANCHES

We invite your careful inspection of all buildings erected by this company.

Do not neglect visiting the new houses just completed on Essex Avenue, opposite Public School.

334 LAND TITLE BUILDING
PHILADELPHIA

209 Haverford Avenue
Narberth, Pa.

THE GREATEST OF HOME ENTERTAINERS
IS THE

Columbia Grafonola

You can purchase a beauty for \$50.00
Cash or on Time

Give your boys and girls a chance to hear good music at home

COLUMBIA PHONOGRAPH CO.

DISTRIBUTORS

1109 CHESTNUT STREET

For sale by all Dealers

GEORGE B. SUPLEE
STEAM
AND
HOT-WATER HEATING
PLUMBING

Bell Phone



NARBERTH GARAGE
OPEN DAY AND NIGHT
STORAGE GASOLINE OILS
WASH AND POLISH

ALL KINDS OF REPAIRING
PREST-O-LITE SERVICE

GEO. B. SUPLEE
Proprietor

CONSULT MY LIST
OF
Choice Suburban Homes
BUILDING LOTS AND ACREAGE

Let me write your Fire Insurance Policy NOW

WM. B. GODFREY

114 Woodside Ave.

NARBERTH, PA.

(MEMBER PHILADELPHIA REAL ESTATE BROKERS' ASSOCIATION)

Bell Phone, Narberth 685 Y

H. P. MOORE & CO.
C O N T R A C T O R S

ROAD BUILDING
CONCRETE AND STONE WORK

Y. M. C. A. BUILDING

NARBERTH, PA.

THE STARLING COMPANY
PHILADELPHIA